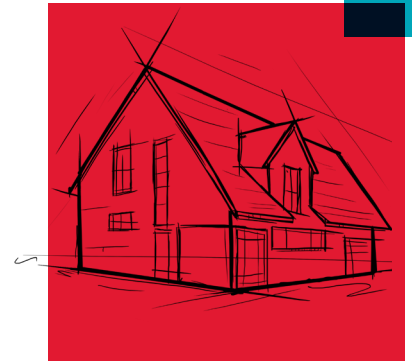


What makes ROCKWOOL the premium insulation?



Release the natural power of stone to enrich modern living.



Fire Resistance:

ROCKWOOL stone wool insulation will not burn or produce smoke and can withstand temperatures up to 2150°F (1177°C). ROCKWOOL can protect your family by delaying the spread of flames.



Water Repellent:

ROCKWOOL stone wool insulation also repels water so its R-value is not comprised by moisture or water. It also contributes to a healthy indoor environment because of its resistance to rot, mildew, mold and bacterial growth.



Thermal Resistance:

ROCKWOOL insulation products make living conditions more healthy and comfortable. Thermal resistance can dramatically reduce heating, cooling, and ventilation costs, and reduce your home's carbon footprint.



Sound Absorbent

ROCKWOOL stone wool helps absorb sound and reduces sound transmissions. This enables productivity in the workplace, and keeps your home quiet and comfortable.



Comfortbatt

Semi-rigid thermal batt insulation designed for exterior studs



Safe'n'Sound

Premium acoustic insulation for interior walls and ceilings between floors



Comfortboard 80

Exterior and Interior non-structural insulated sheathing boards used as continuous insulation

Comfortbatt®

Thermal batt insulation



| R-Value (US) | On Center | Thickness | Width | Length | Coverage |
|------------------|-----------|-----------|--------|------------|-----------------------|
| Wood Stud | | | | | |
| R13 | 16" | 3 1/2 in. | 47 in. | 15 1/4 in. | 59.7 ft. ² |
| R13 | 24" | 3 1/2 in. | 47 in. | 23 in. | 60.1 ft. ² |
| R15 | 16" | 3 1/2 in. | 47 in. | 15 1/4 in. | 59.7 ft. ² |
| R15 | 24" | 3 1/2 in. | 47 in. | 23 in. | 61.1 ft. ² |
| R21 | 16" | 5 1/2 in. | 47 in. | 15 1/4 in. | 39.8 ft. ² |
| R21 | 24" | 5 1/2 in. | 47 in. | 23 in. | 37.5 ft. ² |
| R23 | 16" | 5 1/2 in. | 47 in. | 15 1/4 in. | 39.8 ft. ² |
| R23 | 24" | 5 1/2 in. | 47 in. | 23 in. | 37.5 ft. ² |
| R30 | 16" | 7 1/4 in. | 47 in. | 15 1/4 in. | 29.9 ft. ² |
| R30 | 24" | 7 1/4 in. | 47 in. | 23 in. | 30.7 ft. ² |
| R38 | 16" | 9 1/2 in. | 47 in. | 15 1/4 in. | 19.9 ft. ² |
| R38 | 24" | 9 1/2 in. | 47 in. | 23 in. | 22.5 ft. ² |

| | | | | | |
|-------------------|-----|-----------|--------|------------|-----------------------|
| Steel Stud | | | | | |
| R10 | 16" | 2 1/2 in. | 48 in. | 16 1/4 in. | 86.7 ft. ² |
| R15 | 16" | 3 1/2 in. | 48 in. | 16 1/4 in. | 65 ft. ² |
| R15 | 24" | 3 1/2 in. | 48 in. | 24 1/4 in. | 64.7 ft. ² |
| R24 | 16" | 6 in. | 48 in. | 16 1/4 in. | 43.3 ft. ² |
| R24 | 24" | 6 in. | 48 in. | 24 1/4 in. | 40.4 ft. ² |
| R30 | 16" | 7 1/4 in. | 48 in. | 16 1/4 in. | 32.5 ft |
| R32 | 16" | 8 in. | 48 in. | 16 1/4 in. | 32.5 ft |

Please check with ROCKWOOL™ Customer Service for minimum order quantities. For custom sizes, please contact your ROCKWOOL Sales representative.

ROCKWOOL

8024 Esquesing Line
Milton, ON L9T 6W3
Tel: 1 800 265 6878
rockwool.com

Safe'n'Sound®

Fire & soundproofing insulation



| Stud type | Thickness | Width | Length | Coverage |
|---------------|-----------|------------|----------|------------------------|
| 16" Wood | 3 in. | 15 1/4 in. | 47 in. | 59.7 ft. ² |
| 16" Wood | 6 in. | 15 1/4 in. | 47 in. | 29.87 ft. ² |
| 19.2" Wood | 6 in. | 19 1/5 in. | 47 in.) | 31.33 ft. ² |
| 24" Wood | 3 in. | 23 in. | 47 in. | 60.1 ft. ² |
| 24" Wood | 6 in. | 23 in. | 47 in. | 30.03 ft. ² |
| 16" Steel | 3 in. | 16 1/4 in. | 48 in. | 64 ft. ² |
| 24" Steel | 3 in. | 24 1/4 in. | 48 in. | 64 ft. ² |
| 16" I-Joist | 6 in. | 16 1/4 in. | 48 in. | 32.5 ft. ² |
| 19.2" I-Joist | 3 in. | 19 1/5 in. | 47 in. | 62.7 ft. ² |

Comfortboard® 80

Continuous insulation



| R-Value | Thickness | Width | Length | Coverage |
|---------|-----------|--------|--------|-----------------------|
| R4.2 | 1 in. | 24 in. | 48 in. | 80 ft. ² |
| R5.3 | 1 1/4 in. | 24 in. | 48 in. | 56 ft. ² |
| R5.3 | 1 1/4 in. | 48 in. | 96 in. | 1024 ft. ² |
| R6.3 | 1 1/2 in. | 24 in. | 48 in. | 48 ft. ² |
| R6.3 | 1 1/2 in. | 24 in. | 72 in. | 672 ft. ² |
| R6.3 | 1 1/2 in. | 48 in. | 96 in. | 896 ft. ² |
| R8.4 | 2 in. | 24 in. | 48 in. | 40 ft. ² |
| R8.4 | 2 in. | 48 in. | 96 in. | 640 ft. ² |
| R10.5 | 2 1/2 in. | 24 in. | 48 in. | 32 ft. ² |
| R10.5 | 2 1/2 in. | 48 in. | 72 in. | 384 ft. ² |
| R10.5 | 2 1/2 in. | 48 in. | 96 in. | 576 ft. ² |
| R12.6 | 3 in. | 24 in. | 48 in. | 24 ft. ² |
| R12.6 | 3 in. | 48 in. | 96 in. | 480 ft. ² |
| R16.8 | 4 in. | 24 in. | 48 in. | 16 ft. ² |
| R21 | 5 in. | 24 in. | 48 in. | 16 ft. ² |

