



## Foundation Access Solutions

For basement & crawl space access



- Medium gauge galvanized steel welded construction
- Frankfort latch accepts lock
- Heavy built-on lintel for strength
- Lasting 'spangle grey' galvanized finish



### Design Features

Foundation access doors are installed for utility access convenience for non-emergency applications. Positive Frankfort latch accepts pad locks. Lintel and removable door provides access to crawl space and basements.

### Material

Made from medium gauge galvanized steel with all welded construction. Spangle grey color, they can be finish painted to match any structure.

### Retro Install Instructions

Remove existing door and prepare wood buck for the door to size. Measure and mark dimensions for rough door opening on both the exterior and interior.

Build a four-sided rough buck from treated lumber with a header, base and two side lengths. Attach the buck to the foundation by driving concrete screws into the foundation. Ensure the wood buck is both plumb and level. Place the door and frame into the buck, check for plumb and level and smooth opening and closing and finish attaching the frame to the wood buck.

It might be required to remove a portion of the top 3" lintel each side to fit within the wood buck. Alternatively prepare the opening and use concrete screws directly through the frame into the wall. Use sealant appropriate for exterior use.

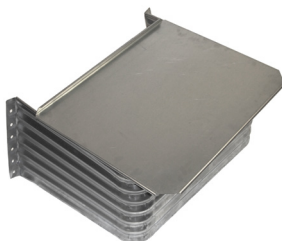
### Foundation Access Doors

FOUNDATION ACCESS DOOR (galvanized)	W x H	DOOR SIZE
FAD 3220	32" x 20"	31.5" x 19"
FAD 3224	32" x 24"	31.5" x 23"

### Accessway Style Areawall and Solid Cover

Accessway Style Well and Solid Cover (galvanized)	"A"	"B"	"C"	SOLID COVER*
EAC3630-24	36"	30"	24"	SC3630
EAC3630-30	36"	30"	30"	SC3630

\*Cover is sold separately



"A" = inside width  
"B" = projection  
"C" = height

### New Construction Instructions

Identify a location for the door that is clear of utility meters, pipes or lines, and allows at least 6 feet of depth clearance on the exterior. With the location chosen, choose a foundation access door size and style to suit your needs.

Position the frame in the masonry opening allowed for the size of door to be installed so that the top lintel extends equally each side of the masonry opening. While ensuring the frame is level and plum, mortar the lintel and finish placing masonry. Grout or use sealant to finish securing the frame in place.

NOTE: 24" x 18" is the minimum size for a building code approved crawl space access. 36" x 24" is the minimum access for a crawl space access with mechanical equipment. Check local code variations.

WARRANTY: Limited 90 day warranty against defects in material and workmanship.

**St. Paul Corrugating Co, Inc.**  
email: [info@stpaulcorrugating.com](mailto:info@stpaulcorrugating.com)  
website: [www.stpaulcorrugating.com](http://www.stpaulcorrugating.com)  
700 39th Ave NE  
Minneapolis MN 55421  
Toll free: 1-800-439-9271



**Lux-Right**  
"The original areawall"

© St. Paul Corrugating Co, Inc 2019 All rights reserved.